

# Requirements for Panorama visualization

## Requirements for Panorama visualization

To create a panorama 360 visualization of a building or a house please provide the following:

\*As well you can send us an image of an apartment you like and we will do the rest

1. DWG Drawing of interior (or any other similar format) including:

- Section drawing
- Top view
- Lighting plans

2. List of Materials (optional)

- Door type
- Window type
- Floor type
- Wall texture
- Stair type

Colors (based on [RAL](#) color chart)

3. Furniture and accessories - use this link to access [3D model](#) library (optional)

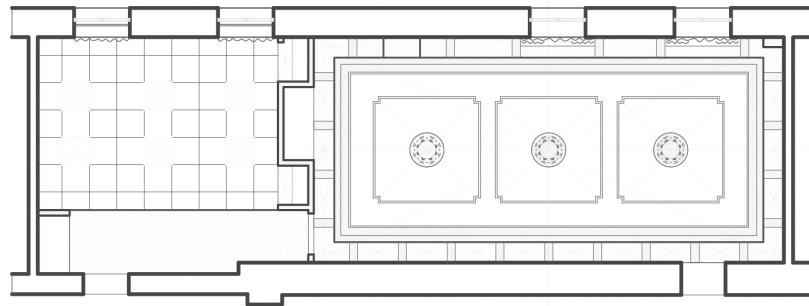
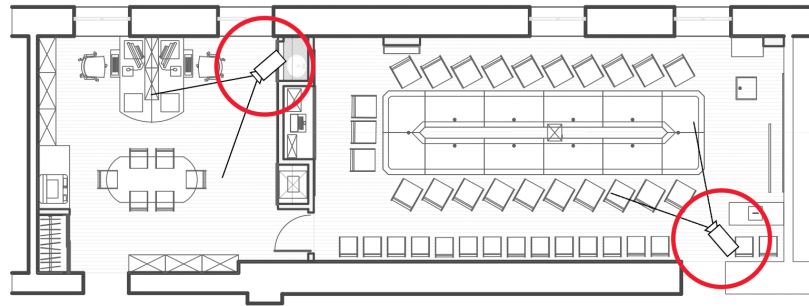
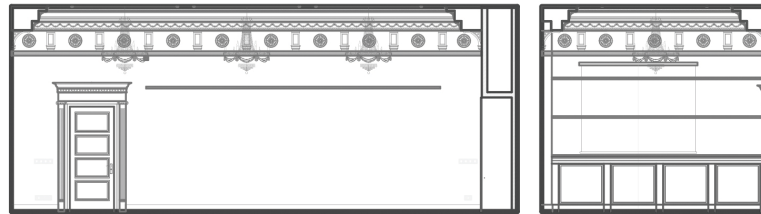
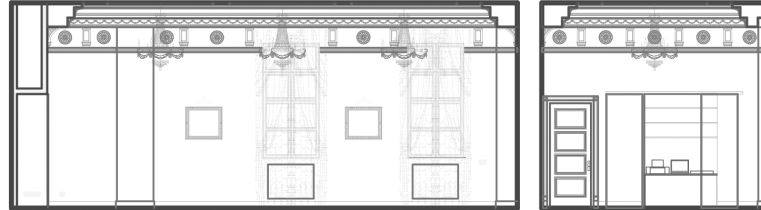
4. View from the windows (optional)

# Requirements for Panorama visualization

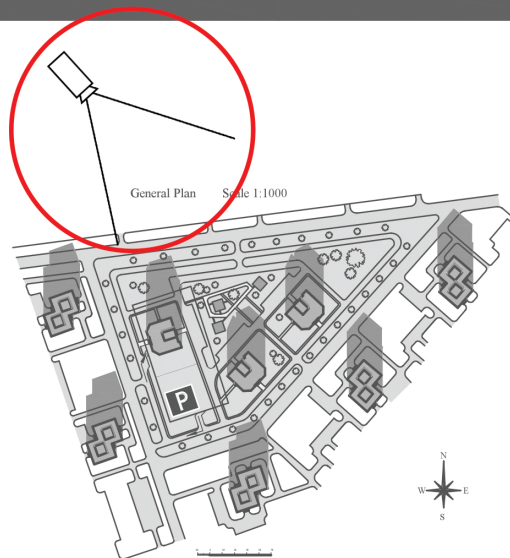
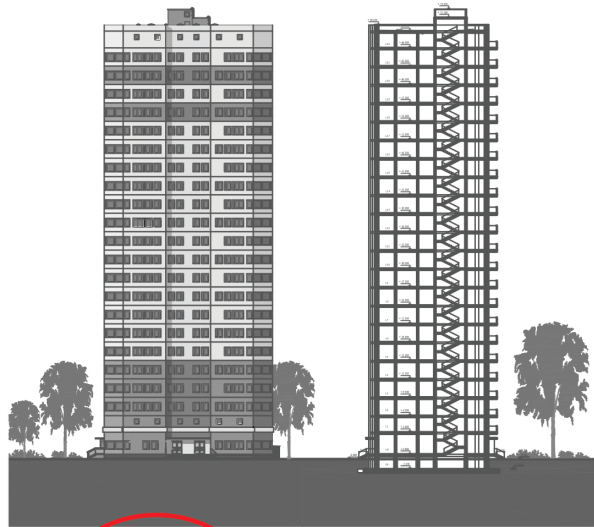
## Requirements for Panorama visualization

5. DWG Drawing of exterior (or any other similar file) including:
  - Section drawing
  - Façade
  - Top view
  - Landscape
6. List of Materials
  - Ground type
  - Landscape
  - Roof material & style
  - Door type
  - Window type
  - Rail material & style
  - Colors (based on [RAL](#) color chart)
7. High resolution base photograph to insert 3D model into

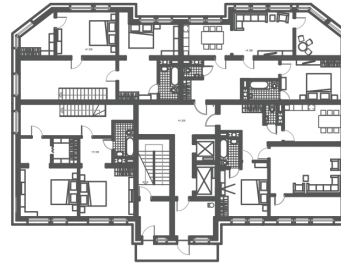
# Requirements for Panorama visualization



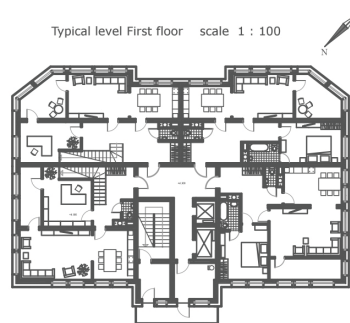
# Requirements for Panorama visualization



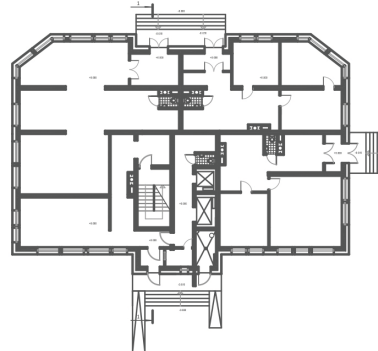
Typical level Second floor scale 1 : 100



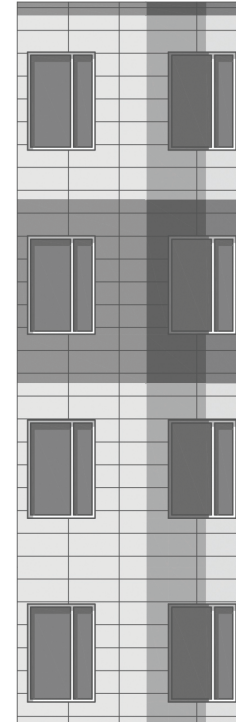
Typical level First floor scale 1 : 100



Level Ground scale 1 : 100



Facade detail



Plan detail

